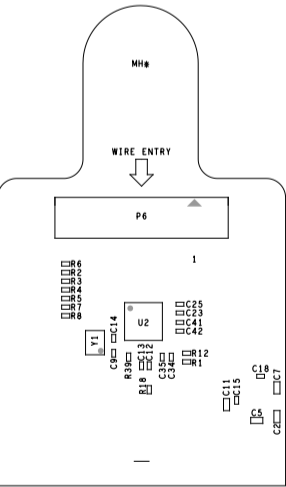



ASSEMBLY NOTES:

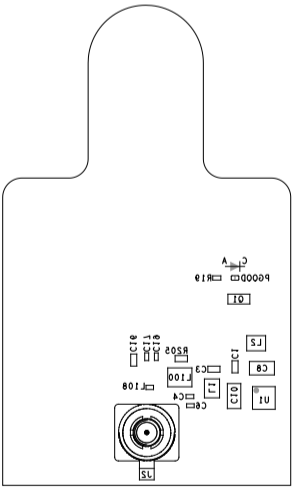
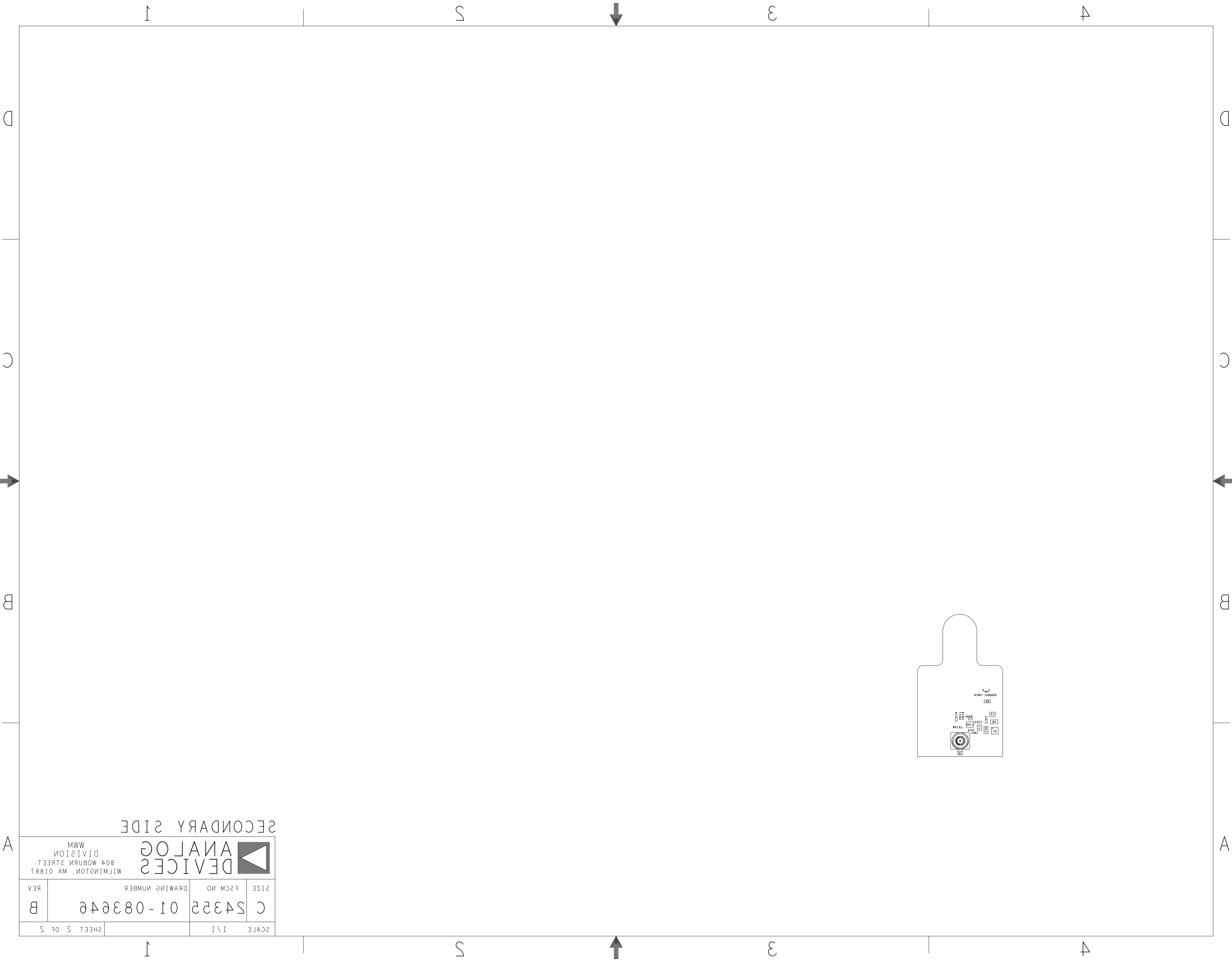
1. BOARD ACCEPTABILITY PER ANALOG DEVICES, INC. SPECIFICATION TST00119 (LATEST REVISION).
2. REPAIRS PER IPC-7711/21(LATEST REVISION) ARE ALLOWED.
3. REPAIRS ARE NOT ALLOWED IN SOLDERMASK FREE AREAS ON EITHER SIDE OF THE BOARD.
4. RoHS COMPLIANCE: ASSEMBLY VENDOR SHOULD ASSURE COMPLIANCE WITH LEAD-FREE AND RoHS PCB ASSEMBLY STANDARDS (EU RoHS DIRECTIVE 2002/95/EC).
5. BOARDS TO BE SHIPPED SINGULATED AFTER ASSEMBLY PROCESS. SMOOTHEN EDGES AND FREE FROM BURRS AFTER DEPANELIZATION.



REVISIONS			
REV	DESCRIPTION	DATE	APPROVED
A	INITIAL RELEASE	31JUL24	C. CARBUNARU
B	ECR-122516	05SEP24	C. CARBUNARU

PRIMARY SIDE

UNLESS OTHERWISE SPECIFIED DIMENSIONS ARE IN INCHES TOLERANCES DECIMALS FRACTIONS ANGLES .XX -.010 --1/32 -- 2 .XXX -.005 .XXX -.0050	APPROVAL		DATE	<div> ANALOG DEVICES</div> <div>WWM DIVISION 804 WOBURN STREET WILMINGTON, MA 01887</div>			
	TEMPLATE ENGINEER N/A		N/A				
	HARDWARE SERVICES M. VALE		31JUL24				
	HARDWARE SYSTEMS N/A		N/A				
MATERIAL	TEST ENGINEER N/A		N/A	TITLE F ABSORPTION AD-MIPI2GMSL2-SL CUSTOMER EVAL Z			
	COMPONENT ENGINEER A. EMPENSANDO		31JUL24				
	TEST PROCESS N/A		N/A				
	HARDWARE RELEASE K. JABATAN		31JUL24				
FINISH	DESIGNER S. DE CASTRO		31JUL24	SIZE	FSCM NO	DRAWING NUMBER	REV
	PTD ENGINEER C. CARBUNARU		31JUL24	C	24355	01-083646	B
	CHECKER N/A		N/A				
	DO NOT SCALE DWG			SCALE	1/1		SHEET 1 OF 2



SECONDARY SIDE

SCALE 1 \ 1				SHEET 5 OF 5	
C	S4352	01 - 083646			
SIZE	FSCM NO	DRAWING NUMBER			
REV	B				
<div>ANALOG DEVICES</div> <div>WILMINGTON, MA 01887</div> <div>804 WOBURN STREET</div> <div>DIVISION</div> <div>MWM</div>					